



# TRUE BLUE® BATH WASTE BRASS FULL KIT W/ SLIP JOINT CONNECTION & FEMALE OUTLET TEE

Job Name _____	Item # _____
Location _____	
Engineer _____	Contractor _____
PO # _____	Tag _____
Representative _____	


## SPECIFICATIONS

The Dearborn True Blue Bath Waste shall be used in commercial and residential applications requiring a bath waste and overflow drain with integrated test features. Overflow and drain elbow components shall come factory preassembled for added convenience. Overflow, Tee and Drain Pipe Connections will be Slip Joint Connections. Tee shall accept 1.5" IPS threaded pipe. Overflow gasket shall be made of a high memory foamed rubber. Drain gasket shall be notched and undercut in order to wrap around drain elbow and lock into place. This will prevent gasket from being knocked off during installation and remain secured to drain elbow regardless of orientation. Test plugs shall be quarter turn installation and must be removable and reusable. Overflow test plug shall be used to install the designer trim veneer with a quarter turn and will not require additional tools or sealants for installation. Faceplate installation shall not require additional tools or screws, symmetrical design will eliminate the need for precise alignment.

## APPROVALS AND LISTINGS

ASME A112.18.2-2015/CSA B125.2-15

 Uniform Plumbing Code (UPC®)

 International Plumbing Code (IPC®)

 ASME A112.18.2-2015/CSA B125.2-15

Listed with Massachusetts Board of Plumbing

## FEATURES AND MATERIALS

Finish Trim	Tool-Free, Screw Free Installation
Test Plugs	Reusable, Quarter Turn Tool-Free Installation
Drain Gasket	Locking Rubber Gasket
Overflow Gasket	High Memory Foamed Rubber
Spud	Chrome Plated Brass
Female Outlet Tee	Accepts 1.5" IPS Threaded Pipe

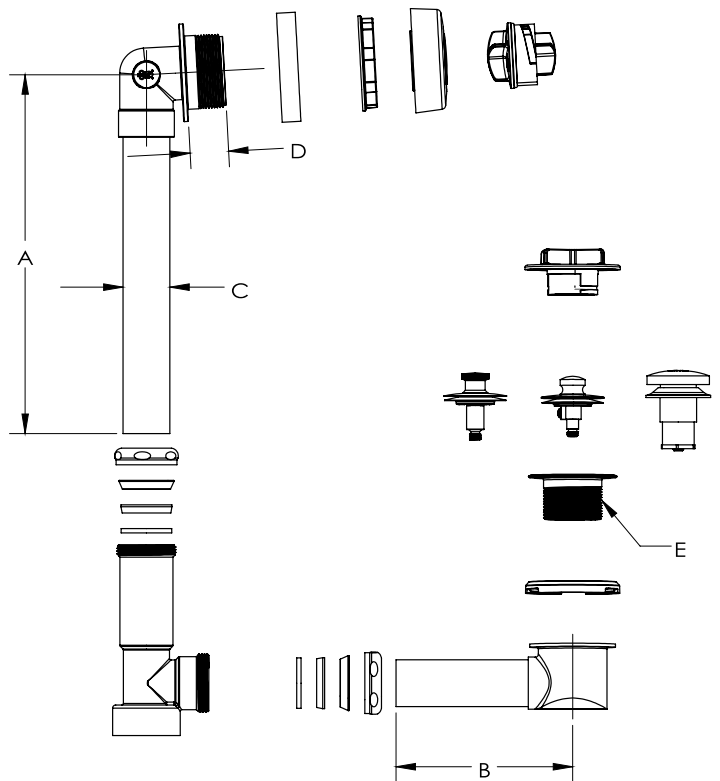
## PERFORMANCE SPECIFICATIONS\*

Test Plug Rating	40 FT Head, 17 PSI
Drain Flow Rate	Min. 7 GPM Max. 15.8 GPM depending on finish
Overflow Flow Rate	4.40 GPM

\*Contact [Technical@Oatey.com](mailto:Technical@Oatey.com) for specific flow rates.

## DIMENSIONS

[A]:	Overflow Height	11.5" (20" For Whirlpool PNs)
[B]:	Drain Pipe Depth	5.66" (11.16" For Whirlpool PNs)
[C]:	Inner Diameter	1.5"
[D]:	Overflow Depth	1.24"
[E]:	Drain / Spud Thread	1.5" – 11.5 NPSM



Access BIM/Revit content through [www.oatey.com](http://www.oatey.com)



# TRUE BLUE® BATH WASTE BRASS FULL KIT W/ SLIP JOINT CONNECTION & FEMALE OUTLET TEE

## PRODUCT SELECTOR

TRUE BLUE® BATH WASTE BRASS FULL KIT W/ SLIP JOINT CONNECTION & FEMALE OUTLET TEE						
✓	Product Number	Brass Gauge	Stopper Style	Finish	Faceplate Style	Length
	B178860CPFO	17	Uni-Lift	Chrome	Clean Out Here	Standard
	B178960CPFO	17	Uni-Lift	Chrome	Clean Out Here	Whirlpool
	B208860CPFO	20	Uni-Lift	Chrome	Clean Out Here	Standard
	B208960CPFO	20	Uni-Lift	Chrome	Clean Out Here	Whirlpool

TRUE BLUE® BATH WASTE TRIM KIT							
✓	Product Number	Stopper Style	Finish	✓	Product Number	Stopper Style	Finish
	K97WH	Touch Toe	White		K98WH	Uni-Lift	White
	K97MB	Touch Toe	Matte Black		K98MB	Uni-Lift	Matte Black
	K97CP	Touch Toe	Chrome		K98BG	Uni-Lift	Brushed Gold
	K97BN	Touch Toe	Brushed Nickel		K99CP	Push & Pull	Chrome
	K97RB	Touch Toe	Oil Rubbed Bronze		K99BN	Push & Pull	Brushed Nickel
	K97BG	Touch Toe	Brushed Gold		K99RB	Push & Pull	Oil Rubbed Bronze
	K98CP	Uni-Lift	Chrome		K99WH	Push & Pull	White
	K98BN	Uni-Lift	Brushed Nickel		K99MB	Push & Pull	Matte Black
	K98RB	Uni-Lift	Oil Rubbed Bronze		K99BG	Push & Pull	Brushed Gold

Access BIM/Revit content through [www.oatey.com](http://www.oatey.com)