



DBLUE BATH WASTE HALF KIT TECHNICAL SPECIFICATION

Job Name _____	Item # _____
Location _____	
Engineer _____	Contractor _____
PO # _____	Tag _____
Representative _____	

SPECIFICATIONS

Dearborn Dblue Bath Waste & Overflow Schedule 40 Plastic Kits are manufactured to strict industry standards. Half Kit contains waste and overflow assemblies for Rough-In installation. Available in Schedule 40 ABS or PVC. Options include one hole face plate, brass or zinc die cast drain units, Condensate Elbow and variety of designer finishes.

DESCRIPTION

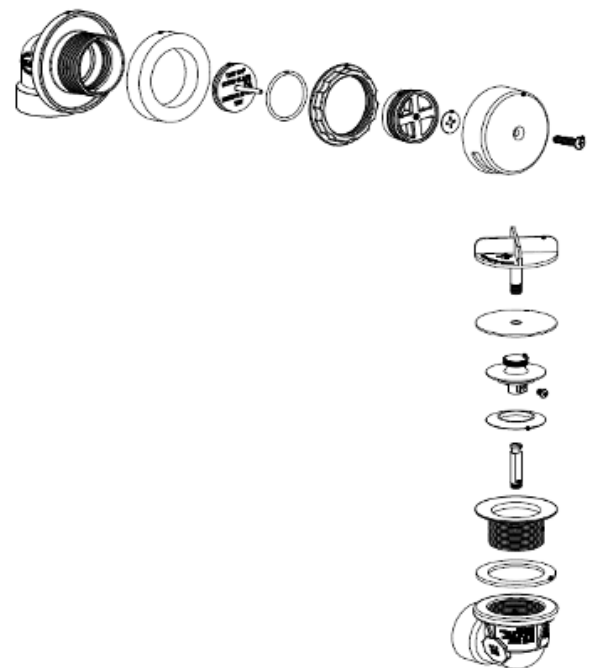
- Schedule 40 PVC or ABS construction
- Single hole faceplate - Mounting hardware included
- Pre-assembled rough-in & test components
- Foam rubber overflow gasket
- Heavy duty lock nut
- Meets ASME A112.18.2 2020/CSA B125.2- 20

APPROVALS AND LISTINGS



PRODUCT SELECTOR

BATH WASTE HALF KITS			
✓	Product Number	Description	Carton Quantity
	A7325	DEA WO DBLUE HK S40 ABS UNI-LIFT CHR	20
	A7325BN	DEA WO DBLUE HK S40 ABS UNI-LIFT BN	20
	A7325BZ	DEA WO DBLUE HK S40 ABS UNI-LIFT CHR ZINC	20
	A7325RB	DEA WO DBLUE HK S40 ABS UNI-LIFT RB	20
	A7725BN	DEA WO DBLUE HK S40 ABS TOUCH TOE BN	20
	P7325	DEA WO DBLUE HK S40 PVC UNI-LIFT	20
	P7325BCZ	DEA WO DBLUE HK S40 PVC UNI-LIFT ZINC CONDENSATE	20
	P7325BN	DEA WO DBLUE HK S40 PVC UNI-LIFT BN	20
	P7325BZ	DEA WO DBLUE HK S40 PVC UNI-LIFT ZINC	20
	P7325RB	DEA WO DBLUE HK S40 PVC UNI-LIFT RB	20
	P7325BMB	DEA WO DBLUE HK S40 PVC UNI-LIFT MB	20
	P7725	DEA WO DBLUE HK S40 PVC TOUCH TOE	20
	P7725BN	DEA WO DBLUE HK S40 PVC TOUCH TOE BN	20



Access BIM/Revit content through www.oatey.com