



BRANCH TAILPIECES, 1/2" NOMINAL SWEAT BRANCH TECHNICAL SPECIFICATION

Job Name _____	Item # _____
Location _____	
Engineer _____	Contractor _____
PO # _____	Tag _____
Representative _____	

SPECIFICATIONS

Dearborn Brass 1-1/2" Brass Tubular Branch Tailpieces with Nominal Sweat Branch are designed for use in tubular drain applications. Available in 17, 20 or Budget Gauge Brass. Options include Unfinished Brass, various lengths and brass nuts.

DESCRIPTION

- Chrome or Unfinished Brass Finish
- Branch Tailpiece with Hose & Clamp Connection:
 - (1) Branch Tailpiece

APPROVALS AND LISTINGS



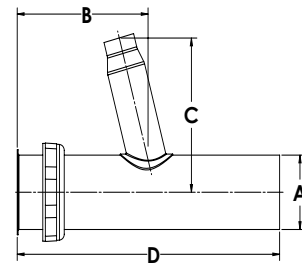
PRODUCT SELECTOR

BRANCH TAILPIECES 1/2" NOMINAL SWEAT BRANCH				
✓	Product Number	Size	Description	Carton Quantity
	812A-1	1-1/2" x 6"	Branch Tailpiece, 1/2" Nominal Sweat Branch, Budget Ga.	10
	812B-1	1-1/2" x 8"	Branch Tailpiece, 1/2" Nominal Sweat Branch, Budget Ga.	10
	812B-3	1-1/2" x 8"	Branch Tailpiece, 1/2" Nominal Sweat Branch, Budget Ga., Unfinished	10
	812B-17BN-3	1-1/2" x 8"	Branch Tailpiece DC, 1/2" Nominal Sweat Branch, 17 Ga. w/ Brass Nut, Unfinished	10

Data is subject to manufacturing tolerances.

DIMENSIONS

[A]:	Diameter A	1.5"	[C]:	Height C	3.11"
[B]:	Length B	See Chart A.1	[D]:	Length D	See Chart A.2



A.1 - LENGTHS		
	Unfinished	Chrome
Length B:	2.0"	2.95"

A.2 - LENGTHS		
	Size 6"	Size 8"
Length D:	6"	8"

Access BIM/Revit content through www.oatey.com