



Job Name _____	Item # _____
Location _____	
Engineer _____	Contractor _____
PO # _____	Tag _____
Representative _____	

# 1-1/2 IN. X 12 IN. BLACK ABS SINK DRAIN EXTENSION TUBE TECHNICAL SPECIFICATION

## SPECIFICATIONS

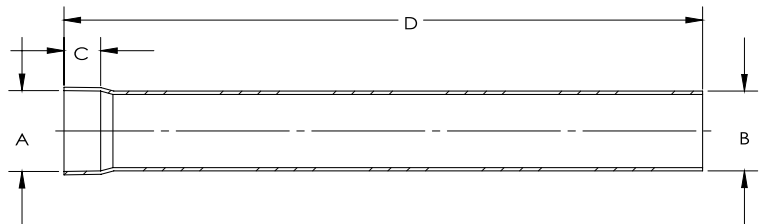
1-1/2 in. x 12 in. ABS solvent weld extension tube features a black finish for an attractive appearance. This extension tube is made for tubular drain applications. ABS construction for durability. Oatey products have earned the trust of plumbing professionals for over 100 years.

## APPROVALS AND LISTINGS



## DIMENSIONS

[A]:	1.515"
[B]:	1.50"
[C]:	0.69"
[D]:	12.0"



## PRODUCT SELECTOR

✓	Product Number	Description	Ctn. Wt.	Ctn. Qty.
	HDC9793	1-1/2 in. x 12 in. Black ABS Sink Drain Extension Tube	1.4375 lbs.	10

Access BIM/Revit content through [www.oatey.com](http://www.oatey.com)