



Job Name _____	Item # _____
Location _____	
Engineer _____	Contractor _____
PO # _____	Tag _____
Representative _____	

1/2 IN. COPPER TUBE SIZE HINGED FLANGE ESCUTCHEON PLATE IN CHROME-PLATED STEEL (20-PACK) TECHNICAL SPECIFICATION

SPECIFICATIONS

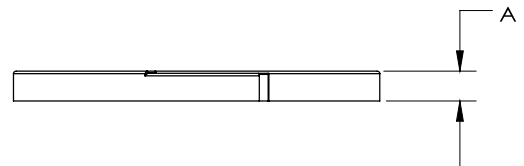
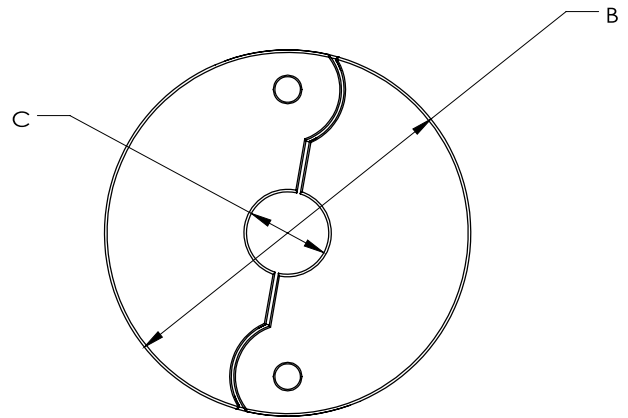
The 1/2 in. Hinged Metal Tube Floor and Ceiling Plate helps cover pipe openings in your wall and is sized to fit 1/2 in. CTS piping. Its chrome-plated finish and low-patterned design provide a decorative touch. The 20-pack is designed with the professional in mind. Oatey products have earned the trust of plumbing professionals for over 100 years.

DIMENSIONS

[A]:	0.23"
[B]:	2.81"
[C]:	0.63"

PRODUCT SELECTOR

✓	Product Number	Description	Ctn. Wt.	Ctn. Qty.
	HDC9699	1/2 in. x 2.5 in. Copper Tube Size Split Flange Escutcheon Plate in Chrome-Plated Steel (20-Pack)	3.7 lbs.	4



Access BIM/Revit content through www.oatey.com