



Job Name _____	Item # _____
Location _____	
Engineer _____	Contractor _____
PO # _____	Tag _____
Representative _____	

1/2 IN. COPPER TUBE CHROME-PLATED FLOOR AND CEILING PLATE (20-PACK) TECHNICAL SPECIFICATION

SPECIFICATIONS

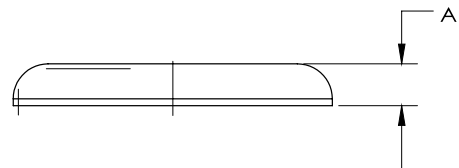
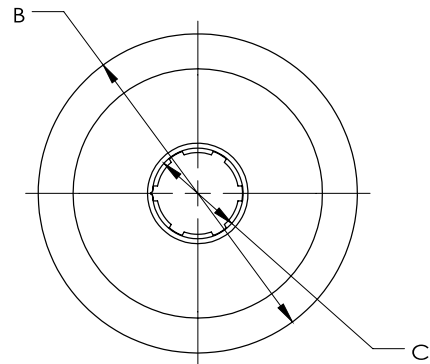
The 1/2 in. Split Floor and Ceiling Plate helps cover pipe openings in your wall and is sized to fit 1/2 in. CTS piping. Its chrome-plated finish and low-patterned design provide a decorative touch. The 20-pack is designed with the professional in mind. Oatey products have earned the trust of plumbing professionals for over 100 years.

DIMENSIONS

[A]:	0.33"
[B]:	2.52"
[C]:	0.72"

PRODUCT SELECTOR

✓	Product Number	Description	Ctn. Wt.	Ctn. Qty.
	HDC9695	1/2 in. x 2.5 in. Copper Tube Chrome-Plated Floor and Ceiling Plate (20-Pack)	1.5 lbs.	4



Access BIM/Revit content through www.oatey.com