



Job Name _____	Item # _____
Location _____	
Engineer _____	Contractor _____
PO # _____	Tag _____
Representative _____	

1/2 IN. - 3/4 IN. CHROME ESCUTCHEON WITH RUBBER COLLAR TECHNICAL SPECIFICATION

SPECIFICATIONS

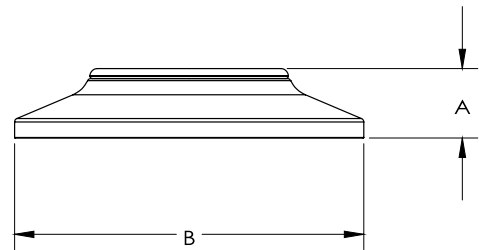
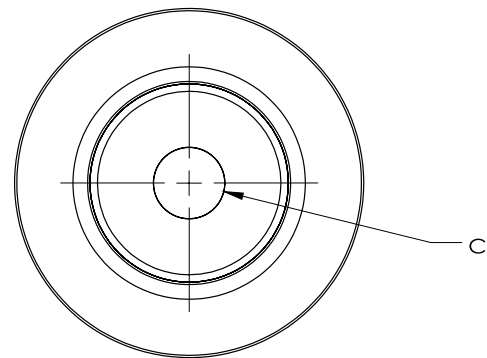
Chrome Escutcheon fits most 1/2 in. to 3/4 in. pipe applications. Recommended for covering the outside diameter of a pipe and inside diameter of a surface. The rubber collar allows for it to fit on several sizes and pipe materials. Oatey products have earned the trust of plumbing professionals for over 100 years.

DIMENSIONS

[A]:	0.56"
[B]:	2.82"
[C]:	0.58"

PRODUCT SELECTOR

✓	Product Number	Description	Ctn. Wt.	Ctn. Qty.
	HDC9685	1/2 in. - 3/4 in. Chrome Escutcheon with Rubber Collar	0.6625 lbs.	20



Access BIM/Revit content through www.oatey.com