



Job Name _____	Item # _____
Location _____	
Engineer _____	Contractor _____
PO # _____	Tag _____
Representative _____	

1-1/2 IN. X 12 IN. BRASS HI-LINE SINK DRAIN TAILPIECE EXTENSION TUBE WITH NOMINAL SWEAT BRANCH TECHNICAL SPECIFICATION

SPECIFICATIONS

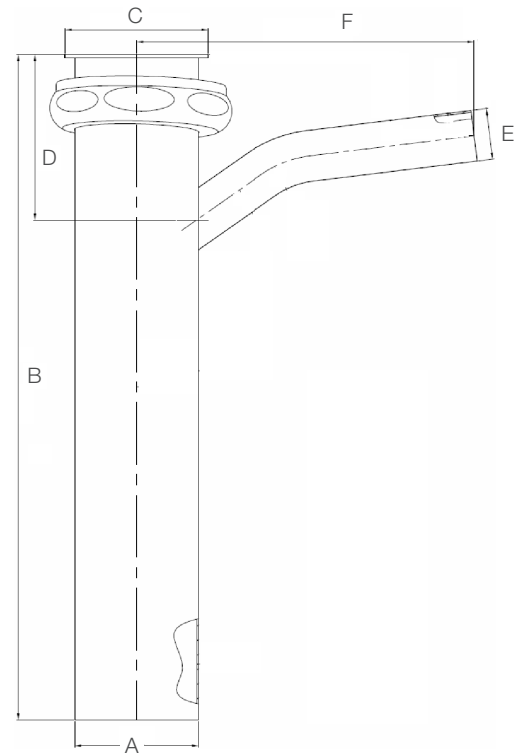
1-1/2 in. x 12 in. Brass Dishwasher Tailpiece features construction from brass for outstanding strength. Comes with a rough brass finish. This direct connect tailpiece features a brass nut and connects to a dishwasher outlet hose in tubular drain applications with its 5/8 in. O.D. (1/2 in. nominal) branch. Dearborn is known for providing superior quality plumbing products designed with the plumber in mind.

DIMENSIONS

[A]:	1.50"
[B]:	12.0"
[C]:	1.71"
[D]:	2.0"
[E]:	0.618"
[F]:	4.1"

PRODUCT SELECTOR

✓	Product Number	Description	Ctn. Wt.	Ctn. Qty.
	HDC813B-3	1-1/2 in. x 12 in. 22-Gauge Brass Hi-Line Sink Drain Tailpiece Extension Tube with Nominal Sweat Branch	3.85 lbs.	8



Access BIM/Revit content through www.oatey.com