



Job Name	_____	Item #	_____
Location	_____		
Engineer	_____	Contractor	_____
PO #	_____	Tag	_____
Representative	_____		

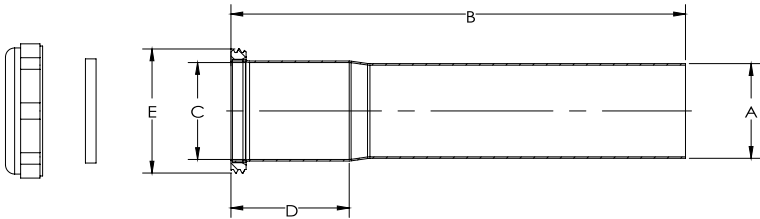
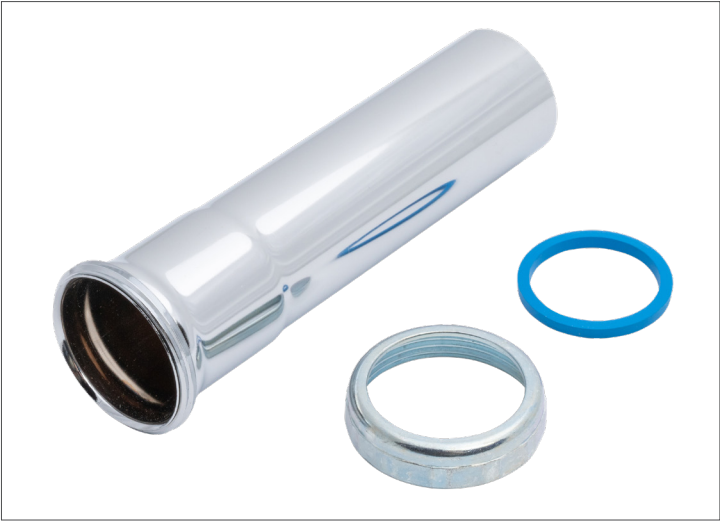
1-1/2 IN. X 6 IN. CHROME-PLATED BRASS SLIP-JOINT SINK DRAIN EXTENSION TUBE TECHNICAL SPECIFICATION

SPECIFICATIONS

1-1/2 in. x 6 in. Brass Extension Tube installs easily to extend the waste connection from your sink to your drain connection. This extension tube features a slip joint connection for quick installation. Made from solid brass construction. Dearborn is known for providing superior quality plumbing products designed with the plumber in mind.

DIMENSIONS

[A]:	1.50"
[B]:	6.0"
[C]:	1.51"
[D]:	1.56"
[E]:	1 1/2-11.5 NPSM



PRODUCT SELECTOR

✓	Product Number	Description	Ctn. Wt.	Ctn. Qty.
	HDC792-1	1-1/2 in. x 6 in. Chrome-Plated 24-Gauge Brass Slip-Joint Sink Drain Extension Tube	2 lbs.	8