



Job Name _____	Item # _____
Location _____	
Engineer _____	Contractor _____
PO # _____	Tag _____
Representative _____	

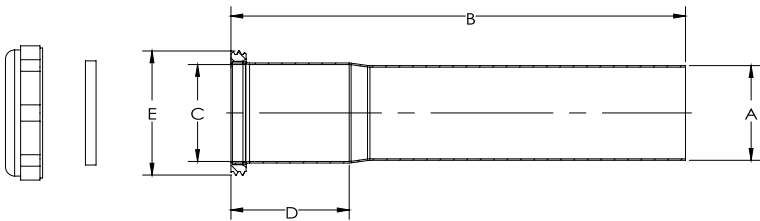
# 1-1/4 IN. X 12 IN. CHROME-PLATED BRASS SLIP-JOINT SINK DRAIN EXTENSION TUBE TECHNICAL SPECIFICATION

## SPECIFICATIONS

1-1/4 in. x 12 in. Brass Extension Tube with Slip Joint Connector in Chrome is ideal for use in tubular drain applications. This extension tube features durable brass construction and a chrome finish. Dearborn is known for providing superior quality plumbing products designed with the plumber in mind.

## DIMENSIONS

[A]:	1.25"
[B]:	12.0"
[C]:	1.28"
[D]:	1.56"
[E]:	1 1/4-11.5 NPSM



## PRODUCT SELECTOR

✓	Product Number	Description	Ctn. Wt.	Ctn. Qty.
	HDC791A-1	1-1/4 in. x 12 in. Chrome-Plated 24-Gauge Brass Slip-Joint Sink Drain Extension Tube	2.1375 lbs.	6