



Job Name _____	Item # _____
Location _____	
Engineer _____	Contractor _____
PO # _____	Tag _____
Representative _____	

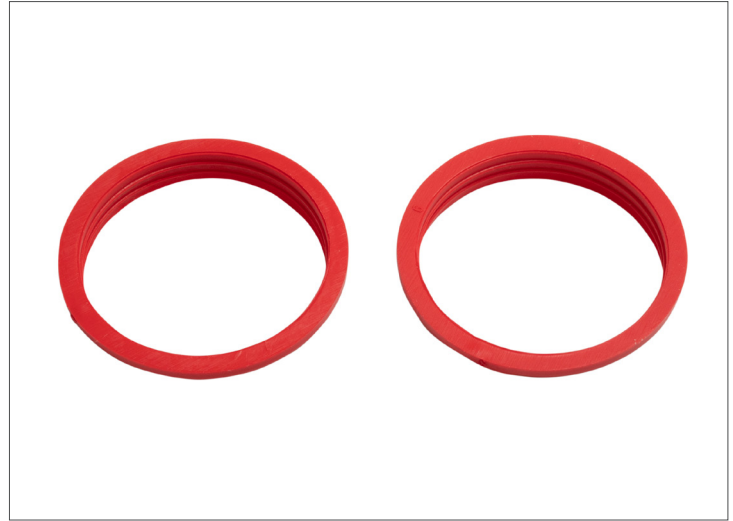
# 1-1/4 IN. SINK DRAIN PIPE RUBBER SLIP-JOINT WASHER (2-PACK) TECHNICAL SPECIFICATION

## SPECIFICATIONS

1-1/4 in. TPE Beveled Washers (2-Pack) are ideal for 1-1/4 in. slip joint connections in tubular drain applications. Oatey products have earned the trust of plumbing professionals for over 100 years.

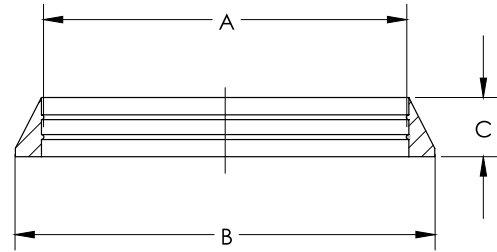
## DIMENSIONS

[A]:	1.23"
[B]:	1.47"
[C]:	0.24"



## PRODUCT SELECTOR

✓	Product Number	Description	Ctn. Wt.	Ctn. Qty.
	HDC7196C	1-1/4 in. Sink Drain Pipe Rubber Slip-Joint Washer (2-Pack)	0.075 lbs.	12



Access BIM/Revit content through [www.oatey.com](http://www.oatey.com)