



| | |
|----------------------|------------------|
| Job Name _____ | Item # _____ |
| Location _____ | |
| Engineer _____ | Contractor _____ |
| PO # _____ | Tag _____ |
| Representative _____ | |

2 IN. CHROME-PLATED STEEL IRON PIPE SIZE HINGED FLOOR & CEILING PLATE TECHNICAL SPECIFICATION

SPECIFICATIONS

The 2 in. Metal Tube Hinged Floor & Ceiling Plate helps cover pipe openings and is sized to fit 2 in. IPS piping. Its chrome-plated finish and low-patterned design provide a decorative touch. Oatey products have earned the trust of plumbing professionals for over 100 years.

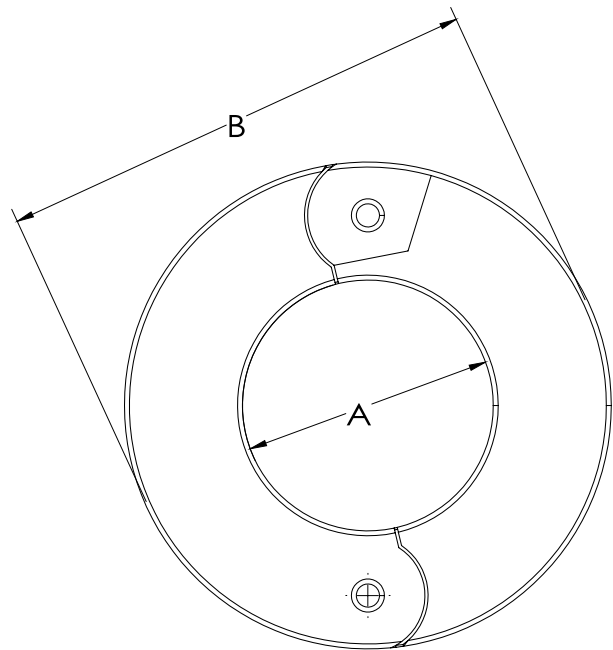
DIMENSIONS

| | |
|-----------|--------|
| [A]: | 2.375" |
| [B]: | 4.61" |
| Thickness | 0.018" |



PRODUCT SELECTOR

| ✓ | Product Number | Description | Ctn. Wt. | Ctn. Qty. |
|---|----------------|---|----------|-----------|
| | HDC5356C | 2 in. Chrome-Plated Steel Iron Pipe Size Hinged Floor & Ceiling Plate | 0.9 lbs. | 12 |



Access BIM/Revit content through www.oatey.com