



Job Name _____	Item # _____
Location _____	
Engineer _____	Contractor _____
PO # _____	Tag _____
Representative _____	

1-1/4 IN. CHROME-PLATED STEEL IRON PIPE SIZE HINGED FLOOR & CEILING PLATE TECHNICAL SPECIFICATION

SPECIFICATIONS

The 1-1/4 in. Metal Tube Hinged Floor & Ceiling Plate helps cover pipe openings and is sized to fit 1-1/4 in. IPS piping. Its chrome-plated finish and low-patterned design provide a decorative touch. Oatey products have earned the trust of plumbing professionals for over 100 years.

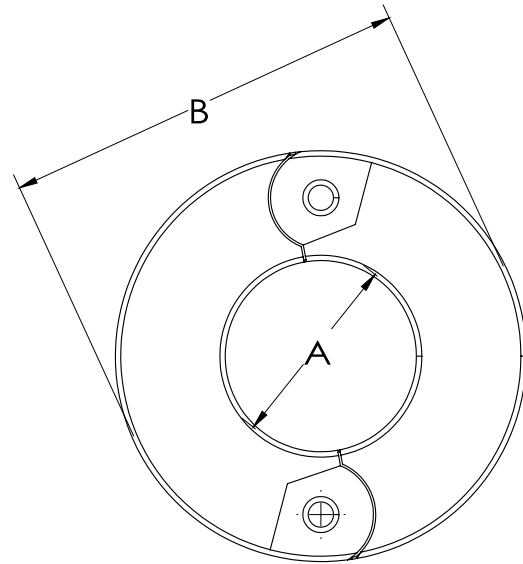
DIMENSIONS

[A]:	1.660"
[B]:	3.57"
Thickness	0.018"



PRODUCT SELECTOR

✓	Product Number	Description	Ctn. Wt.	Ctn. Qty.
	HDC5354C	1-1/4 in. Chrome-Plated Steel Iron Pipe Size Hinged Floor & Ceiling Plate	0.525 lbs.	12



Access BIM/Revit content through www.oatey.com