



Job Name _____	Item # _____
Location _____	
Engineer _____	Contractor _____
PO # _____	Tag _____
Representative _____	

# 1-1/2 IN. SINK DRAIN PIPE PLASTIC SLIP-JOINT NUT WITH WASHERS TECHNICAL SPECIFICATION

## SPECIFICATIONS

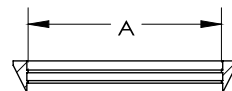
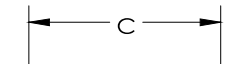
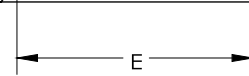
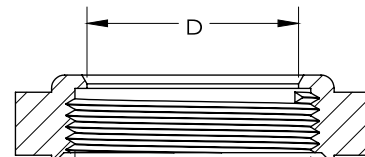
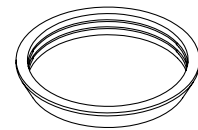
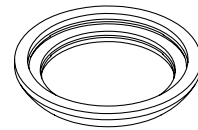
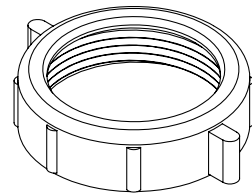
1-1/2 in. Plastic Slip Joint Nut and Washer are designed for use with plastic tubular slip joint connections. The polypropylene wing nut and TPE reducing washer and slip joint washer are durable and strong. Ideal for white plastic tubular slip joint connections. Oatey products have earned the trust of plumbing professionals for over 100 years.

## DIMENSIONS

[A]:	1.47"
[B]:	1.228"
[C]:	1.47"
[D]:	1.61"
[E]:	1-1/2-11.5 NPSM

## PRODUCT SELECTOR

✓	Product Number	Description	Ctn. Wt.	Ctn. Qty.
	HDC2698C	1-1/2 in. Sink Drain Pipe Plastic Slip-Joint Nut with Rubber Washers	0.78125 lbs.	25



Access BIM/Revit content through [www.oatey.com](http://www.oatey.com)