



Job Name _____	Item # _____
Location _____	
Engineer _____	Contractor _____
PO # _____	Tag _____
Representative _____	

1-1/2 IN. X 4-3/4 IN. BLACK ABS GARBAGE DISPOSAL TAILPIECE TECHNICAL SPECIFICATION

SPECIFICATIONS

1-1/2 in. x 4-3/4 in. ABS In-Sink-Erator Disposal Tailpiece can be used to replace a leaking or damaged tailpiece or for a new installation. This black ABS plastic tailpiece fits most In-Sink-Erator models and includes a gasket. Oatey products have earned the trust of plumbing professionals for over 100 years.

APPROVALS AND LISTINGS

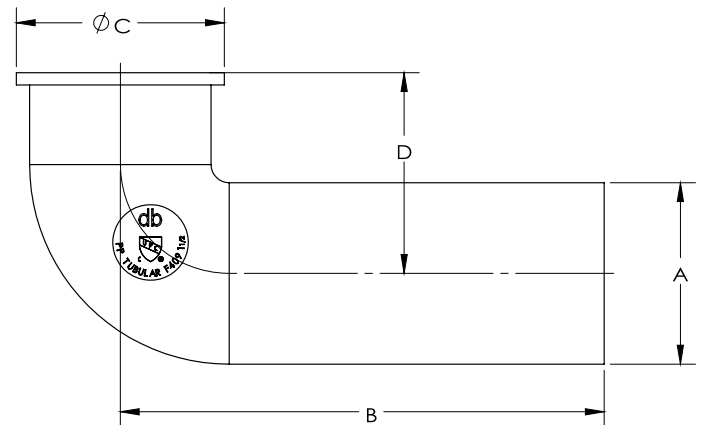
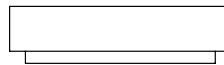


DIMENSIONS

[A]:	1.5"
[B]:	4.0"
[C]:	1.72"
[D]:	1.66"

PRODUCT SELECTOR

✓	Product Number	Description	Ctn. Wt.	Ctn. Qty.
	HDC2670	1-1/2 in. x 4-3/4 in. Black ABS Garbage Disposal Tailpiece	0.6875 lbs.	10



Access BIM/Revit content through www.oatey.com