



Job Name _____	Item # _____
Location _____	
Engineer _____	Contractor _____
PO # _____	Tag _____
Representative _____	

1-1/2 IN. X 7 IN. UNFINISHED BRASS SLIP-JOINT SINK DRAIN OUTLET WASTE ARM TECHNICAL SPECIFICATION

SPECIFICATIONS

1-1/2 in. x 7 in. Waste Arm with Slip Joint is for use with center and end-outlet waste assemblies (not included) in tubular drain applications. The waste arm features a slip joint connection and heavy duty unfinished brass tubing. Dearborn is known for providing superior quality plumbing products designed with the plumber in mind.

APPROVALS AND LISTINGS

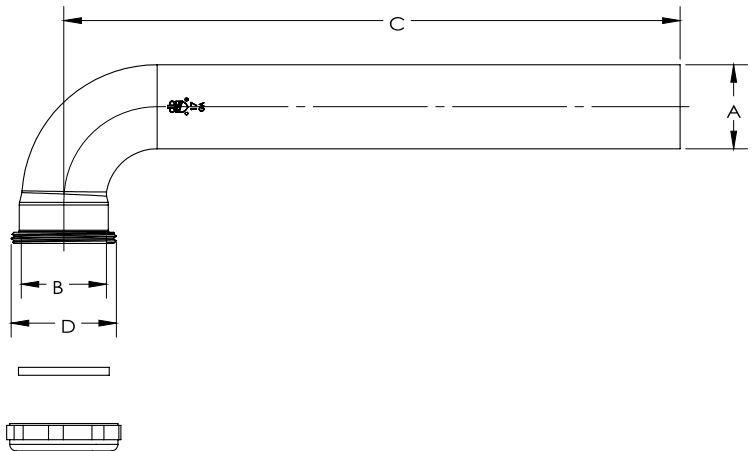


DIMENSIONS

[A]:	1.50"
[B]:	1.52"
[C]:	11"
[D]:	1 1/2-11.5 NPSM

PRODUCT SELECTOR

✓	Product Number	Description	Ctn. Wt.	Ctn. Qty.
	HDC137-17-3	1-1/2 in. x 7 in. 17-Gauge Unfinished Brass Slip-Joint Sink Drain Outlet Waste Arm	5.125 lbs.	10



Access BIM/Revit content through www.oatey.com