



PLASTIC TUBULAR 1-1/2" DESIGNER FINISH P-TRAP TECHNICAL SPECIFICATION

Job Name _____	Item # _____
Location _____	
Engineer _____	Contractor _____
PO # _____	Tag _____
Representative _____	

SPECIFICATIONS

Dearborn 1-1/2" Finish Plated P-Traps are designed for use in tubular drain applications. Components are constructed of ABS and use a Slip Joint Connection. Available in Chrome, Brushed Nickel, or Oil Rubbed Bronze finishes.

DESCRIPTION

- Finish Plated P-Trap
 - (1) J-Bend
 - (1) Wall Tube
 - (1) Deep Flange
 - (3) Washers
 - (1) Reducing Washer
 - (2) Wing Nuts
 - (1) Nut

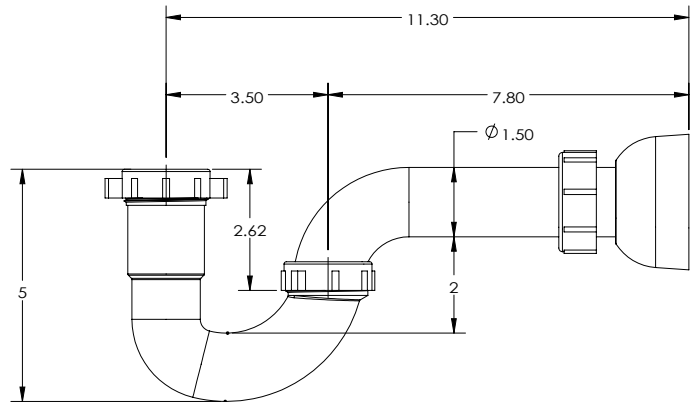
APPROVALS & LISTINGS

- Meets ASTM F 409
- IAPMO Listed



PRODUCT SELECTOR

PLASTIC TUBULAR 1-1/2" DESIGNER FINISH P-TRAP			
✓	Product Number	Description	Carton Quantity
	DB400CP	1-1/2" P-Trap w/ Chrome Finish	5
	DB400BN	1-1/2" P-Trap w/ Brushed Nickel Finish	5
	DB4000RB	1-1/2" P-Trap w/ Oil Rubbed Bronze Finish	5



Data is subject to manufacturing tolerances.

Access BIM/Revit content through www.oatey.com