



# BRANCH TAILPIECES, 1/2" NOMINAL SWEAT BRANCH TECHNICAL SPECIFICATION

## SPECIFICATIONS

Dearborn Brass 1-1/2" Brass Tubular Branch Tailpieces with Nominal Sweat Branch are designed for use in tubular drain applications. Available in 17, 20 or Budget Gauge Brass. Options include Unfinished Brass, various lengths and brass nuts.

## DESCRIPTION

- Chrome or Unfinished Brass Finish
- Branch Tailpiece with Hose & Clamp Connection:
  - (1) Branch Tailpiece

## APPROVALS AND LISTINGS



## PRODUCT SELECTOR

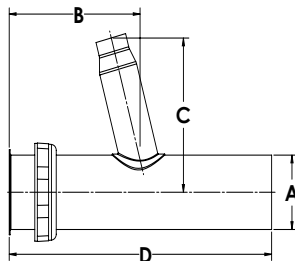
| BRANCH TAILPIECES 1/2" NOMINAL SWEAT BRANCH |                |             |   |                 |
|---|----------------|-------------|---|-----------------|
| ✓   | Product Number | Size        | Description   | Carton Quantity |
|   | 812A-1         | 1-1/2" x 6" | Branch Tailpiece, 1/2" Nominal Sweat Branch, Budget Ga.                         | 10              |
|   | 812B-1         | 1-1/2" x 8" | Branch Tailpiece, 1/2" Nominal Sweat Branch, Budget Ga.                         | 10              |
|   | 812B-3         | 1-1/2" x 8" | Branch Tailpiece, 1/2" Nominal Sweat Branch, Budget Ga., Unfinished             | 10              |
|   | 812B17BN3      | 1-1/2" x 8" | Branch Tailpiece DC, 1/2" Nominal Sweat Branch, 17 Ga. w/ Brass Nut, Unfinished | 10              |

Data is subject to manufacturing tolerances.

## DIMENSIONS

|      |            |               |      |          |               |
|------|------------|---------------|------|----------|---------------|
| [A]: | Diameter A | 1.5"          | [C]: | Height C | 3.11"         |
| [B]: | Length B   | See Chart A.1 | [D]: | Length D | See Chart A.2 |

|                |            |
|----------------|------------|
| Job Name       | Item #     |
| Location       |            |
| Engineer       | Contractor |
| PO #           | Tag        |
| Representative |            |



| A.1 - LENGTHS |            |        |
|---------------|------------|--------|
|               | Unfinished | Chrome |
| Length B:     | 2.0"       | 2.95"  |

| A.2 - LENGTHS |         |         |
|---------------|---------|---------|
|               | Size 6" | Size 8" |
| Length D:     | 6"      | 8"      |

Access BIM/Revit content through [www.oatey.com](http://www.oatey.com)