



# 1-1/2" DOUBLE SLIP JOINT EXTENSION TUBES TECHNICAL SPECIFICATION

Job Name \_\_\_\_\_ Item # \_\_\_\_\_  
Location \_\_\_\_\_  
Engineer \_\_\_\_\_ Contractor \_\_\_\_\_  
PO # \_\_\_\_\_ Tag \_\_\_\_\_  
Representative \_\_\_\_\_

## SPECIFICATIONS

Dearborn Brass 1-1/2" Brass Tubular Double Slip Joint Extension Tubes are designed for use in tubular drain applications. Available in 20 or Budget Gauge Brass. Options include 12" or 16" length and Brass Nuts.

## DESCRIPTION

- Chrome Finish
- 1-1/2" Double Slip Joint Extension Tube:
  - (1) Double Extension Tube
  - (2) Nuts
  - (2) Rubber Washers

## APPROVALS AND LISTINGS



## PRODUCT SELECTOR

1-1/2" DOUBLE SLIP JOINT EXTENSION TUBE				
✓	Product Number	Size	Description	Carton Quantity
	793B-1	1-1/2" x 12"	Double Slip Joint Extension Tube - Budget Gauge	5
	793BD-1	1-1/2" x 16"	Double Slip Joint Extension Tube - Budget Gauge	5
	793BD 20BN	1-1/2" x 16"	Double Slip Joint Extension Tube - 20 Gauge, Brass Nuts	5
	93BD 20BN3	1-1/2" x 16"	Double Slip Joint Extension Tube - 20 Gauge, Brass Nuts - Unfinished	5

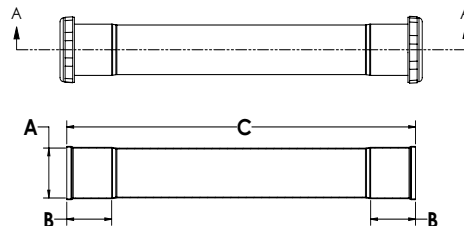
Data is subject to manufacturing tolerances.

## DIMENSIONS

[A]:	Size A	1.50"	[C]:	Length C	See Chart A.1
[B]:	Length B	1.58"			

### A.1 - LENGTHS

	Size 1-1/2" x 12"	Size 1-1/2" x 16"
Length B:	12"	16"



Access BIM/Revit content through [www.oatey.com](http://www.oatey.com)