



1-1/4" WALL TUBES TECHNICAL SPECIFICATION

Job Name _____	Item # _____
Location _____	
Engineer _____	Contractor _____
PO # _____	Tag _____
Representative _____	

SPECIFICATIONS

Dearborn Brass 1-1/4" Brass Tubular Wall Tubes are designed for use in tubular drain applications.

DESCRIPTION

- Chrome Plated
- Wall Tube
 - (1) Quarter Bend Tube

APPROVALS AND LISTINGS



PRODUCT SELECTOR

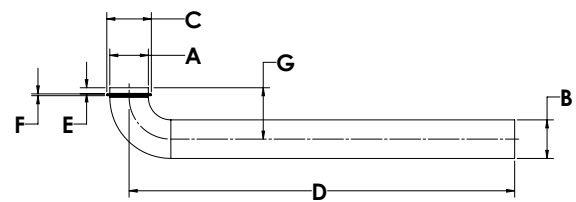
1-1/4" WALL TUBES				
✓	Product Number	Size	Description	Carton Quantity
	401A-17-1	1-1/4"	Wall Tube - 10" Length - 17 Gauge	10
	401C-17-1	1-1/4"	Wall Tube - 21" Length - 17 Gauge	25
	401D-17-1	1-1/4"	Wall Tube - 33" Length - 17 Gauge	25
	401E-17-1	1-1/4"	Wall Tube - 45" Length - 17 Gauge	10

Data is subject to manufacturing tolerances.

DIMENSIONS

[A]:	Diameter A	1.25"	[E]:	Height D	0.24"
[B]:	Diameter B	1.25"	[F]:	Thickness	0.10"
[C]:	Diameter C	1.50"	[G]:	Height G	2.1"
[D]:	Length D	See Chart A.1			

A.1 - LENGTHS				
	10" Wall Tube	21" Wall Tube	33" Wall Tube	45" Wall Tube
Length D:	10"	21"	33"	45"



Access BIM/Revit content through www.oatey.com