

# INSTRUCTION GUIDE

## SADDLE TEE INSTALLATION



# 1

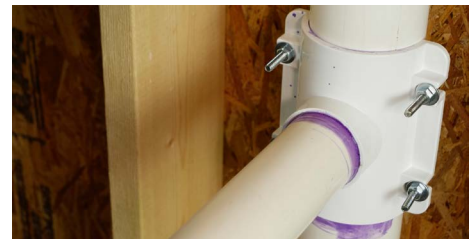
Lay out the installation.

**a**

Using the clamps and without using any cement, affix the saddle tee to the existing pipe. Line it up so that the tee is properly oriented to accept the incoming pipe.

**b**

Writing on the existing pipe, trace around the inside of the incoming fitting.



# 2

Cut a hole in the existing pipe.

**a**

Remove the saddle tee and use the appropriate sized hole saw to cut a hole in the existing pipe. Make sure that the hole is large enough and properly aligned to allow water flow through unimpeded.

# 3

For plastic pipe: Cement the saddle tee in place.

**a**

Remove mud, oil, or any other foreign material from the surfaces to be solvent welded. On PVC pipe and saddle tee, apply primer or cleaner liberally to the surfaces to be joined. Clean ABS Surfaces without using solvent.

**b**

Apply a thin coat of the appropriate cement (ABS cement for ABS pipe, PVC cement for PVC pipe) to the saddle tee surface.

**c**

Promptly place the tee in position on the pipe over the hole. Hold it firmly in place for at least 15 seconds.

# INSTRUCTION GUIDE

## SADDLE TEE INSTALLATION



*...continued*

- d** Leave the saddle tee undisturbed for at least two hours and wait eight hours at room temperature before applying pressure. In extremely cold conditions, it may be necessary to wait longer.

### 4

For metal pipe.

- a** Use gasket (available separately) underneath the saddle tee. Cut the gasket material away from the hole in the existing pipe.
- b** Secure the gasket with the V-clamps, as detailed below.

### 5

Install the V-Clamps (for both plastic and metal pipes).

- a** Place the V-clamps around the existing pipe and through the slots on the saddle tee.
- b** Place a washer over each of the threaded ends of the clamps and thread the nuts on after them.
- c** Tighten them down firmly and securely, without over tightening.

### 6

Solvent weld incoming pipe.

- a** Incoming pipe can be solvent welded directly in the tee. Follow the manufacturer's instructions on the cement can label.