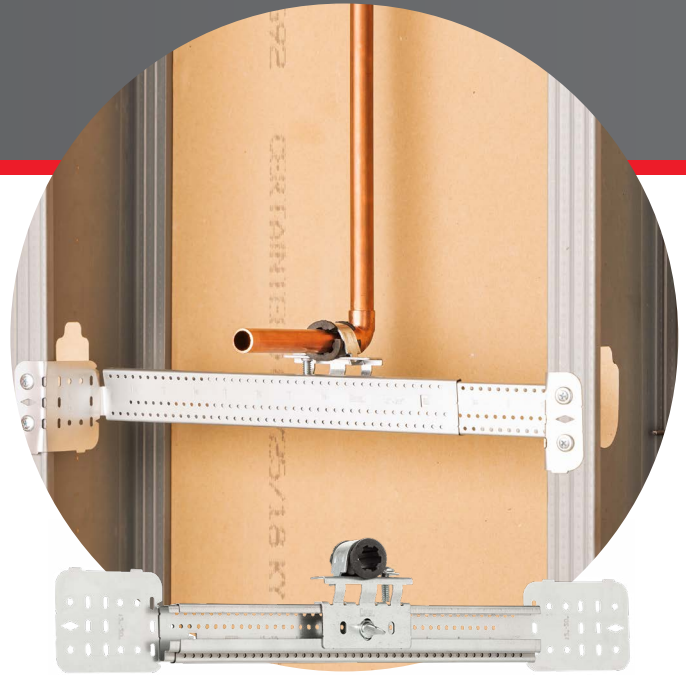




# BRACKETING KITS

## FEATURES AND BENEFITS

- Allow for easy adjustments during installation, ensuring precise alignment and secure positioning
- Durable steel construction
- For use with PEX or CPVC/copper piping
- Compatible with a variety of pipe support accessories, such as Self-Closing Clamps and Combo Clamps



## SLIDING WALL BRACKET STUB-OUT KITS



- Extendable bracket easily slides to needed depth to accommodate stud width, eliminating the need to measure or cut
- Mounts pipes, electrical boxes and conduit between studs
- Kits include one or two stub outs that adjust and slide into place by simply loosening a thumb screw – no additional tools needed
- PEX kits feature unique struggle-free assembly, requiring no kinking or bending of the PEX – simply snap the pipe into the bracket

## LIGHT ANGLED WALL BRACKET STUB-OUT KITS



- Used to support vertical piping and horizontal stub-outs within the wall
- Four mounting points for added strength and stability
- Hole pattern allows for adjustable stub-outs every 2 in.  $\pm$  1/2 in.

Find us on    

©2024 OateySCS. All Rights Reserved. This information is based on data believed to be reliable but Oatey makes no warranties, express or implied, as to its accuracy and assumes no liability arising out of its use. The data listed falls within the normal range of product properties but should not be used to establish specification limits or used alone as the basis of design. Oatey's liability to purchasers is expressly limited to the terms and conditions of sale. Oatey is a trademark of Oatey Co. Oatey Co. is part of the Oatey family of companies. All other trademarks can be found on [www.oatey.com](http://www.oatey.com).