




## SLPAN32SW AND SLPAN40SW TECHNICAL SPECIFICATION

### DESCRIPTION

ShowerLine side waste outlet (SW) pre-sloped shower pan shall be used for installing linear drains with a horizontal outlet orientation. It shall be made of extruded rigid PET (polyethylene terephthalate) plastic foam. It is strong yet lightweight, non-reactive, economical, and shatterproof.

- Chemically stable, UV resistant and suitable for both interior and exterior use
- Can be used with both sheet and liquid topical waterproofing
- Speed and consistency of installation
- Eliminates the need for traditional mud bed installations
- Lightweight, durable with high compressive strength 145 PSI
- Interlocking design, can be quickly and easily modified to size and shape of on site conditions
- Meets IAPMO PS-106
- Made of 100% post-consumer recycled content; fully recyclable. 
- Custom curb sizes available

### APPLICATIONS / USES

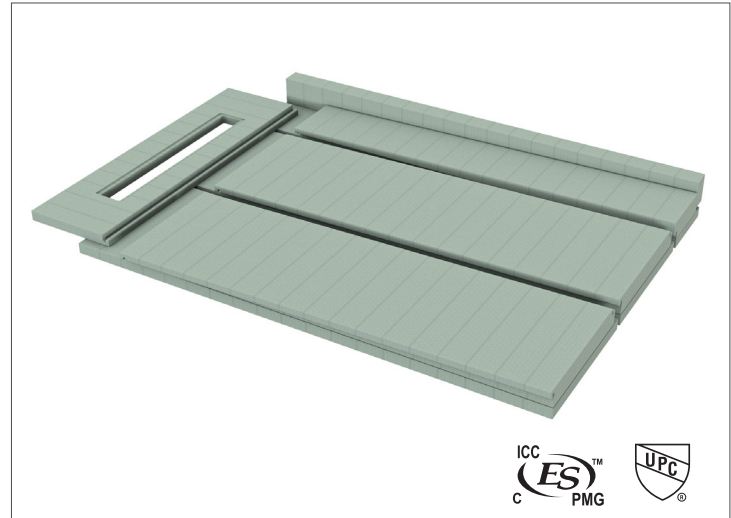
- Interior and exterior use
- Industrial, commercial and residential showers
- Gang showers
- Pet Showers

### SUITABLE SUBSTRATES (INTERIOR ONLY)

- Concrete
- Exterior Glue Plywood
- Cement backer board\*\*
- OSB or Avantech

\*\*Consult cement backer board manufacturer for specific installation recommendations

Job Name _____	Item # _____
Location _____	
Engineer _____	Contractor _____
PO # _____	Tag _____
Representative _____	



### SHOWERLINE PAN INCLUDES

- Flat Panel (3000003457)
- Drain Support Frame (3000003451 or 3000003452)
- QuickSlope Panels (3000003459 and 3000003460)
- Curb (3000003450)
- Curb Lags (5)

### APPROVALS AND LISTINGS

Before installing the QuickDrain system, check with your local building department/plumbing inspector to ensure compliance with the local building codes. QuickDrain is not responsible for any conflicts with local building codes. QuickDrain is not responsible for improper installation of any part of the assembly or the waterproofing membrane. Dimensions are subject to manufacturer's tolerance and can change without notice.

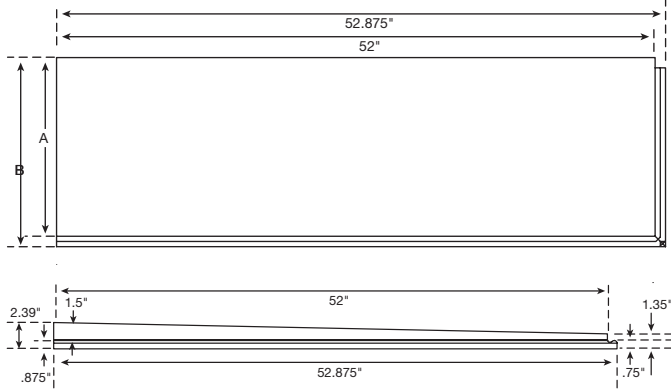
	DRAIN SUPPORT FRAME		QUICKSLOPE PANELS		FLAT PANELS		CURB
MODEL	3000003451	3000003452	3000003459	3000003460	3000003457	3000003458	3000003450
SLPAN32SW	1	-	2	-	2	-	1
SLPAN40SW	-	1	2	1	2	1	1

Access BIM/Revit content through [www.oatey.com](http://www.oatey.com)

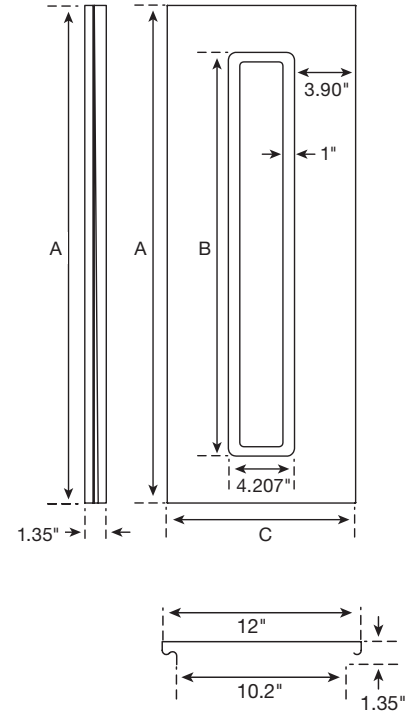


## SLPAN32SW AND SLPAN40SW TECHNICAL SPECIFICATION

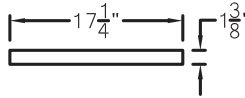
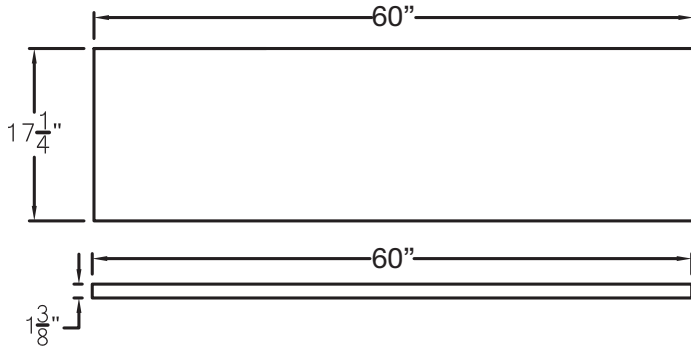
### DIMENSIONS QUICK SLOPES (3000003459, 3000003460)



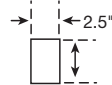
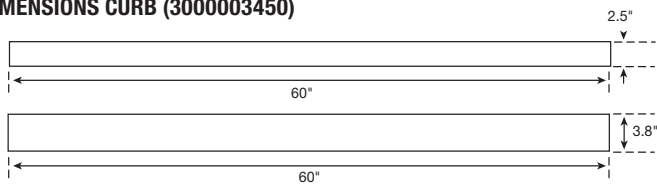
### DIMENSIONS DRAIN SUPPORT FRAME (SLDSF)



### DIMENSIONS FLAT PANELS (3000003457 / 3000003458)



### DIMENSIONS CURB (3000003450)



MODEL	A Surface Width	B Total Width (including interlock tongue and groove)	C Surface Length	D Total Length (including interlock tongue and groove)
3000003459	16"	16-7/8"	52"	52-7/8"
3000003460	7-1/8"	8"	52"	52-7/8"

MODEL	A Total Width	B Trough Opening	C Total Length (including interlock tongue and groove)
3000003451	32"	26"	12"
3000003452	40"	34"	12"

MODEL	A
3000003457	17-1/4"
3000003458	8-1/2"

Access BIM/Revit content through [www.oatey.com](http://www.oatey.com)